

JC30

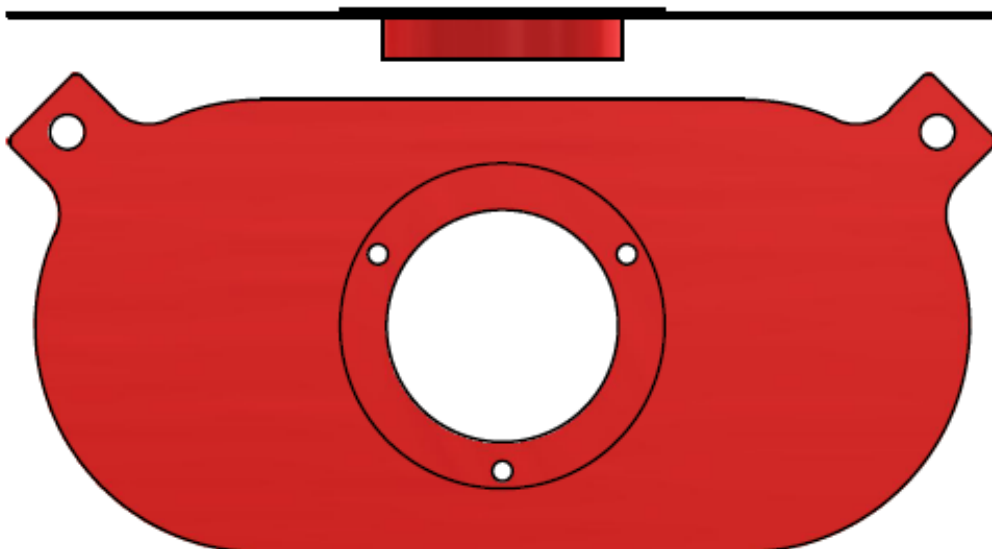
Single Carburettor Filter Baseplates

Baseplates - JC30

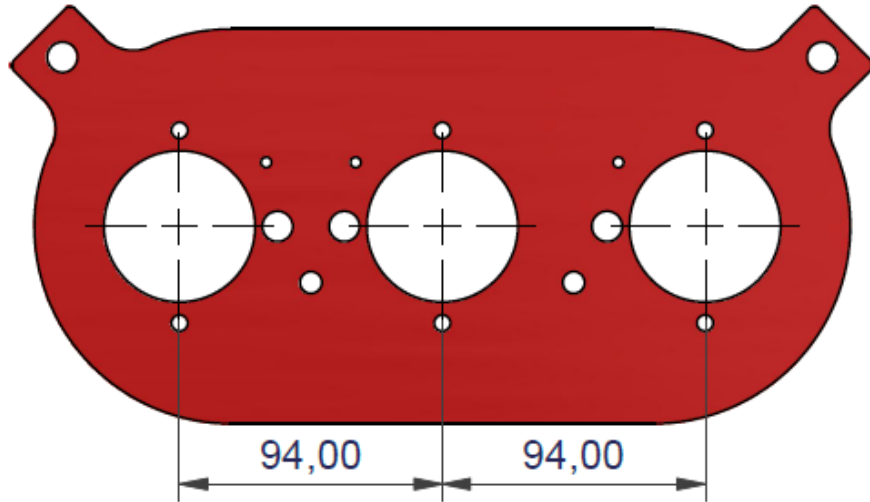
Part No	Carburettors - Engine/Manifold Fitting	Centres (mm)
1JC30	Blank Baseplate (Steel Painted)	N/A



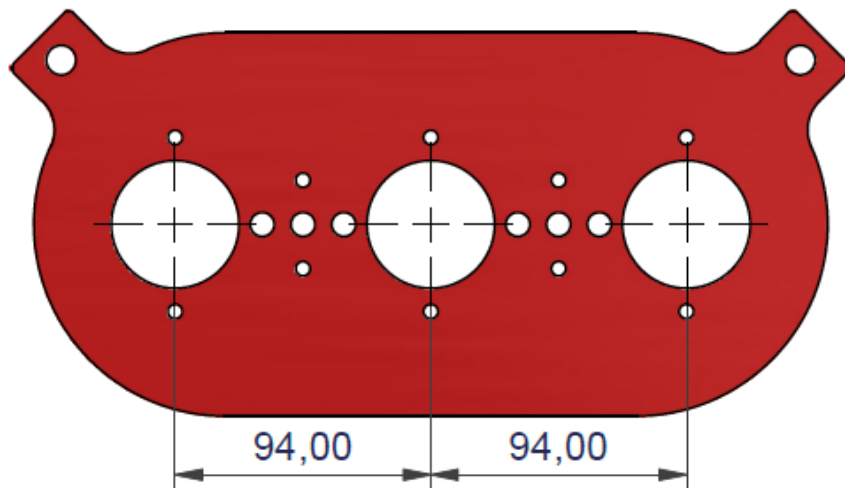
3JC30	Mini - Multi Point Injection 1.3 MPI	N/A
-------	---	-----



Part No	Carburetors - Engine/Manifold Fitting	Centres (mm)
4JC30	PMO Carbs	94



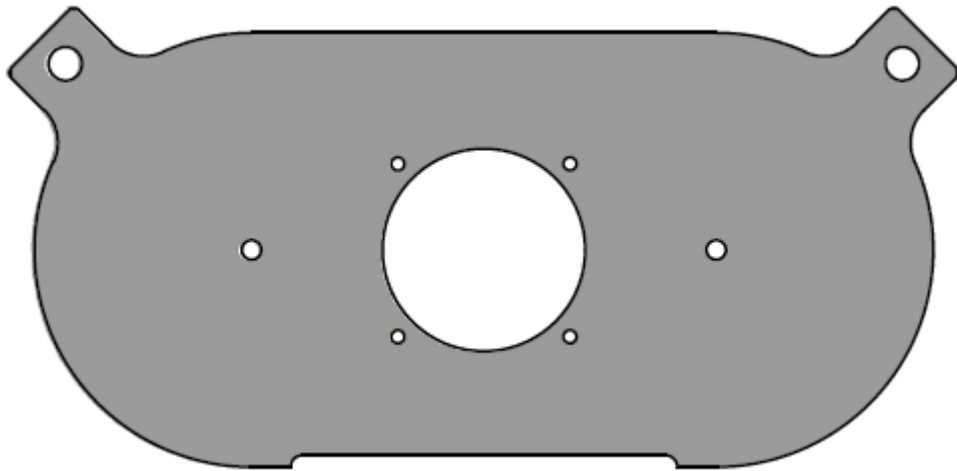
5JC30	(2x) Weber IDA3C Porsche 911	94
-------	---------------------------------	----



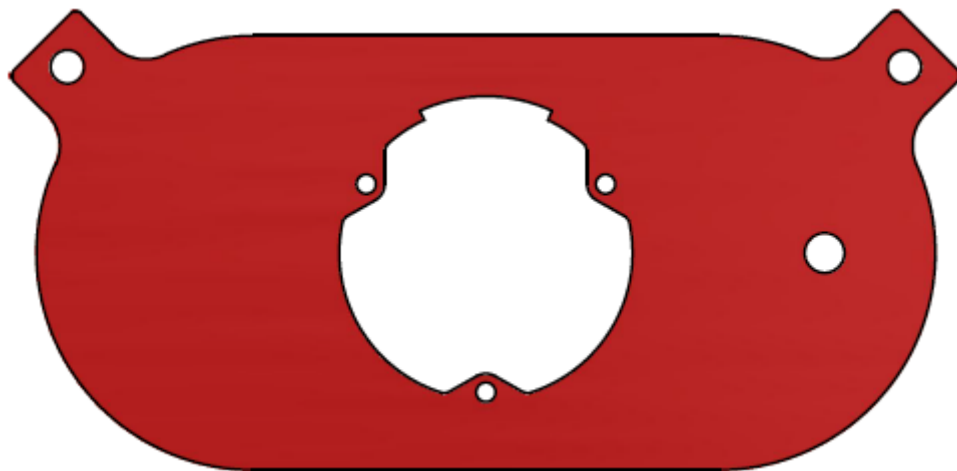
6JC30	Blank Baseplate (Aluminium)	N/A
-------	--------------------------------	-----



Part No	Carburetors - Engine/Manifold Fitting	Centres (mm)
7JC30	Radical (Aluminium)	N/A



22JC30	Mini - Single Point Injection Mini EFI, Cooper, SPI	N/A
--------	--	-----



Megaflow Custom Laser Cut Baseplate Profiles

Can't find an off-shelf baseplate to suit your application?

We offer a Laser Cutting service for custom profiles, where an off-shelf solution cannot be found. With the below information from you we can create a direct fit baseplate specific to your vehicle!

How to specify custom ITG Megaflow Baseplates...

For Weber DCOE Carbs, Throttle Bodies or similar, we require the brand/model of the setup. From this information we can determine your port spacings which are in most cases 90mm set by the manufacturer of the inlet.

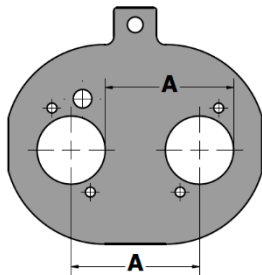
E.g.- Weber 45 DCOE

Jenvey 48 ITB's

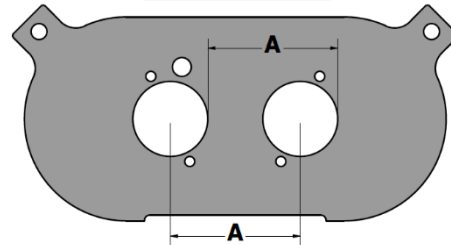
SU-HS6

We then need to know the centre-to-centre distance (**A**) for the main air intakes. This can be measured directly from the centres or if easier, from edge-edge of the main opening's as shown in the diagrams.

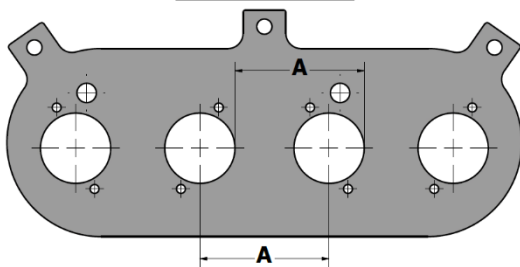
JC20 Baseplate



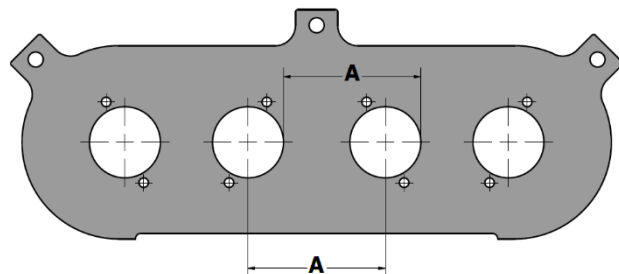
JC30 Baseplate



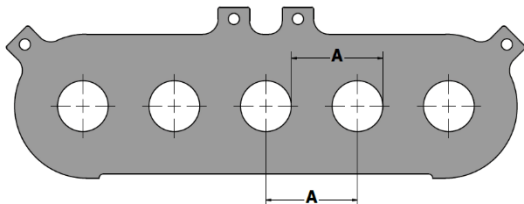
JC40 Baseplate



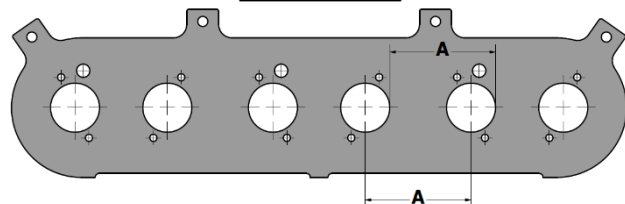
JC50 Baseplate



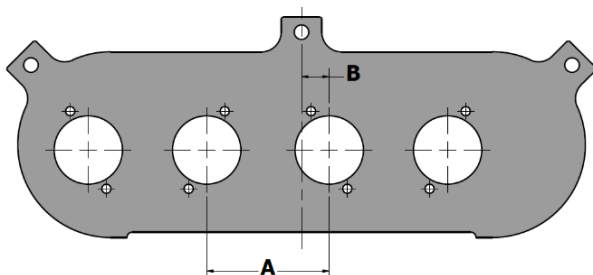
JC55 Baseplate



JC100 Baseplate



How to specify custom offset Megaflow Baseplates...



Profiles are normally centralised, however where required we can offset the profile to clear bodywork. We will work with you to find the ideal offset value (RH or LH) to ensure there will be no internal filter clearance issues, such as airhorns touching internal filter support cages (**B**).

Get in touch with our Technical team for a quote today - technical@itgairfilters.com