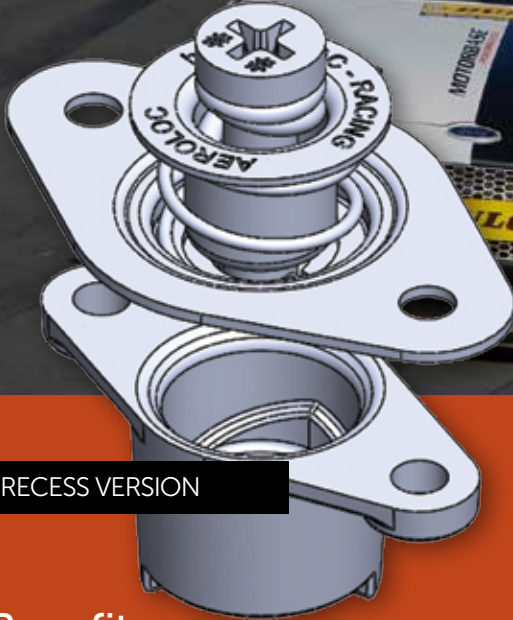


AeroLoc[®]

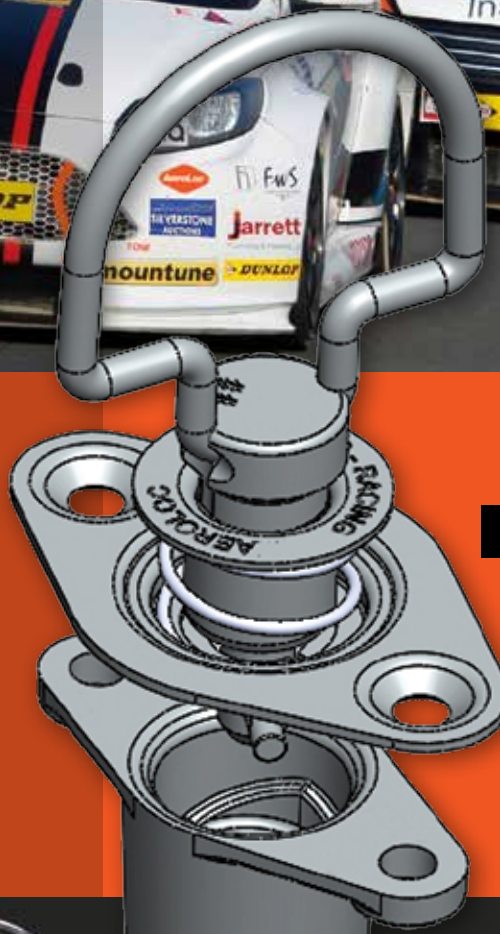
Technical Data AND ORDERING INFORMATION



CROSS RECESS VERSION

Benefits

- Security - stays locked in place
- Consistent performance
- Flush fitting and quick to operate
- Durable with high cycle life
- Choice of head styles



BAIL HANDLE VERSION

A robust, long lasting answer to the problem of secure panel fastening



AeroLoc[®]

Motorsport has been waiting 80 years for this.

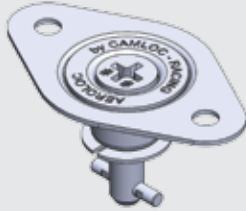
Camloc 
Traditionally Innovative



The quarter turn game changer

4 styles available

Tool Operated

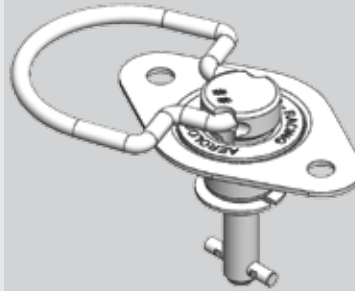


CROSS RECESS
PLAIN FIXING HOLES
200-1000 SERIES

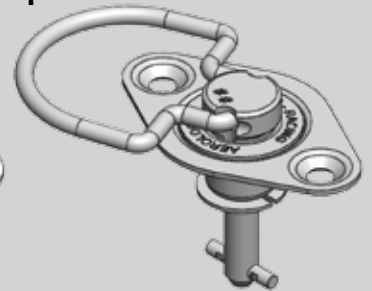


CROSS RECESS
COUNTERSUNK FIXING HOLES
(1MM MIN PANEL THICKNESS)
200-1100 SERIES

Hand Operated



BAIL HANDLE
PLAIN FIXING HOLES
200-5000 SERIES



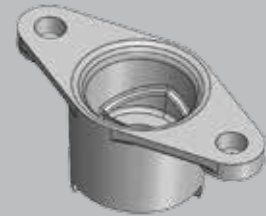
BAIL HANDLE
COUNTERSUNK FIXING HOLES
(1MM MIN PANEL THICKNESS)
200-5100 SERIES



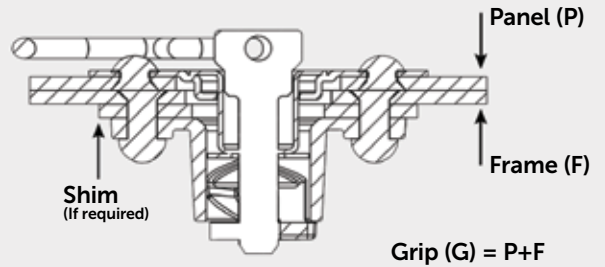
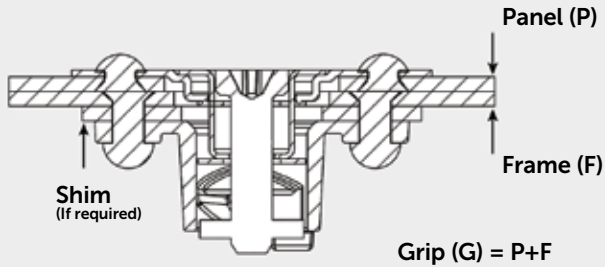
SHIM 0.8MM
205-9008



SHIM 1.5MM
205-9015



RECEPTACLE
205-1000



Specifying your AeroLoc

- 1 Select head style and plate fixing (see above).
- 2 Measure your panel (P) and frame (F) and add them together. This is the grip size (G) required (see diagrams above).
- 3 Refer to Table 1 and select the stud part number for your grip (G).

TABLE 1

200-1000 Series	200-1100 Series	200-5000 Series	200-5100 Series	GRIP		SHIM	RECEPTACLE
				MIN	MAX		
200-1007	200-1107	200-5007	200-5107	3.55 (0.14)	4.30 (0.17)	205-9015	205-1000
200-1007	200-1107	200-5007	200-5107	4.30 (0.17)	5.10 (0.20)	205-9018	205-1000
200-1007	200-1107	200-5007	200-5107	5.10 (0.20)	5.85 (0.23)	N/A	205-1000
200-1008	200-1108	200-5008	200-5108	5.85 (0.23)	6.60 (0.26)	N/A	205-1000
200-1009	200-1109	200-5009	200-5109	6.60 (0.26)	7.30 (0.29)	N/A	205-1000
200-1010	200-1110	200-5010	200-5110	7.30 (0.29)	8.15 (0.32)	N/A	205-1000
200-1011	200-1111	200-5011	200-5111	8.15 (0.32)	8.9 (0.35)	N/A	205-1000

DIMENSIONS MM (IN)



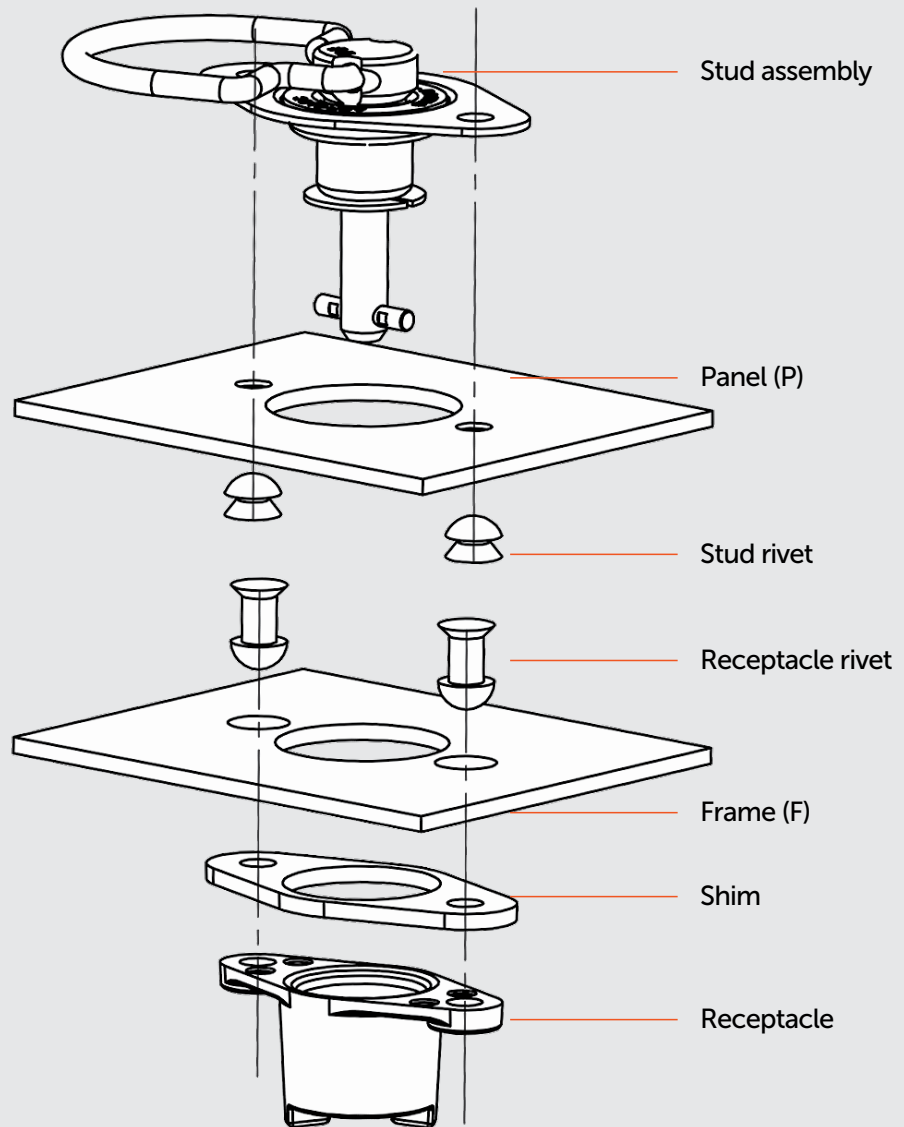
AeroLoc panel and frame preparation

AeroLoc fasteners are grip range sensitive. To ensure the panel seats correctly for a given grip range, it is important that any protrusions below the panel from the stud assembly fixings are taken into account.

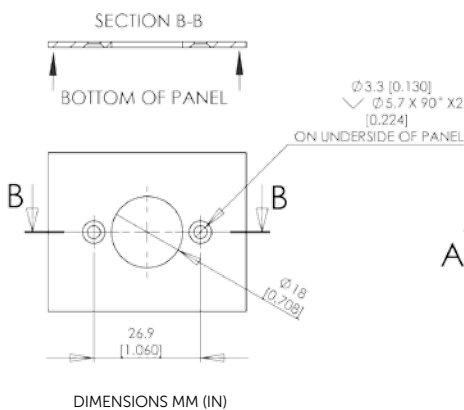
If you are using a 200-1100 or 200-5100 style stud assembly riveted from above, provision needs to be made for the rivet bodies in the frame.

This can be achieved by rotating the receptacle fixing hole position by 35 degrees and drilling 2 x 5.0mm clearance holes for the stud assembly rivet bodies.

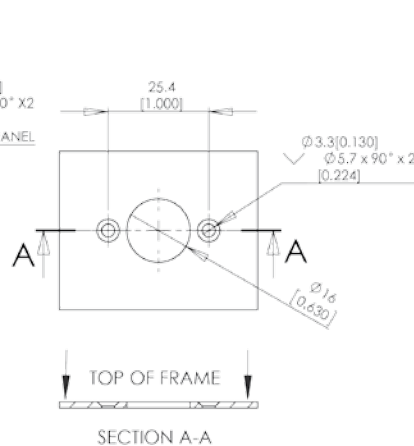
Typical assembly 200-5007 Bail Handle



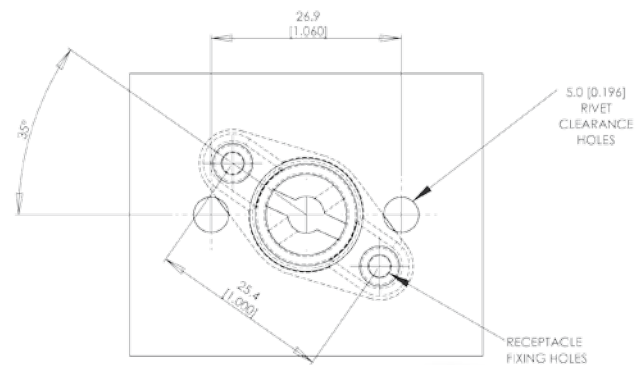
Panel preparation



Frame preparation



Frame preparation for 200-1100 and 200-5100 countersunk stud assemblies



Technical Information CAD MODELS AVAILABLE ON REQUEST

CROSS RECESS STUD ASSEMBLY

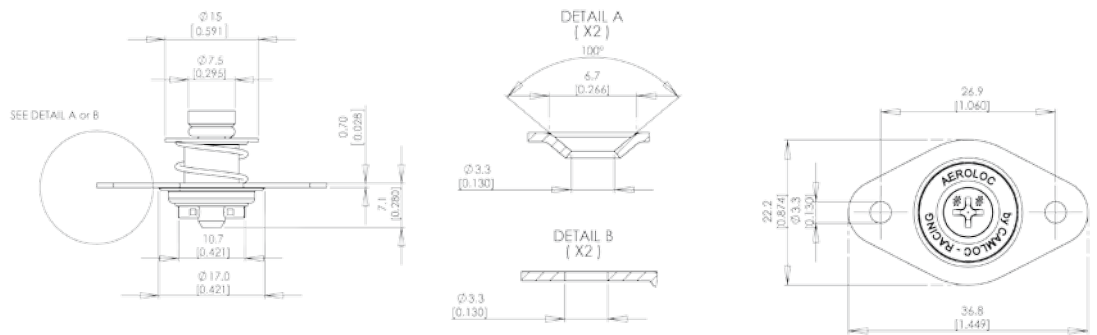
200-1000 SERIES
CROSS RECESS WITH
PLAIN FIXING HOLES

200-1100 SERIES
CROSS RECESS WITH
COUNTERSUNK FIXING
HOLES

MATERIAL: STEEL

FINISH: ZINC AND CLEAR
PASSIVATED - REACH
COMPLIANT

DIMENSIONS MM (IN)



BAIL HANDLE STUD ASSEMBLY

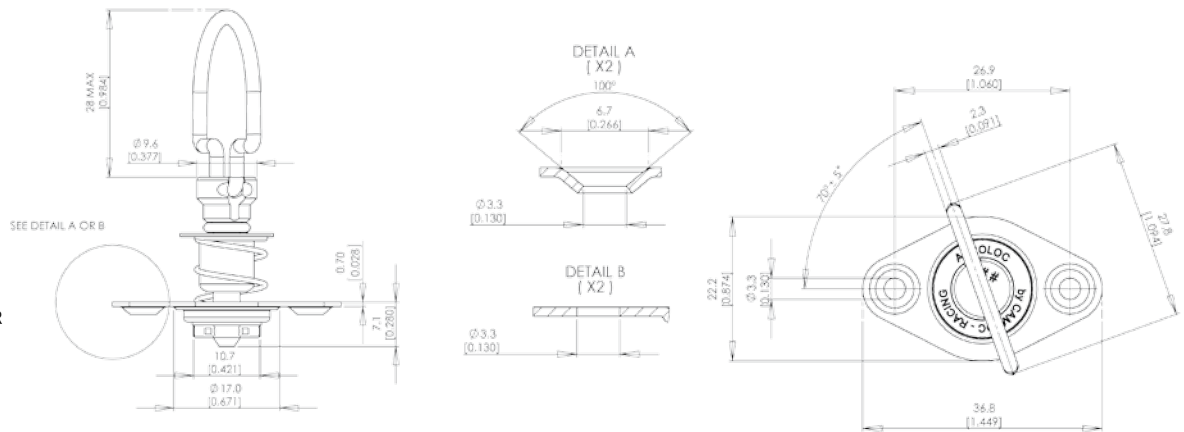
200-5000 SERIES
BAIL HANDLE WITH
PLAIN FIXING HOLES

200-5100 SERIES
BAIL HANDLE WITH
COUNTERSUNK FIXING
HOLES

MATERIAL: STEEL

FINISH: ZINC AND CLEAR
PASSIVATED - REACH
COMPLIANT

DIMENSIONS MM (IN)



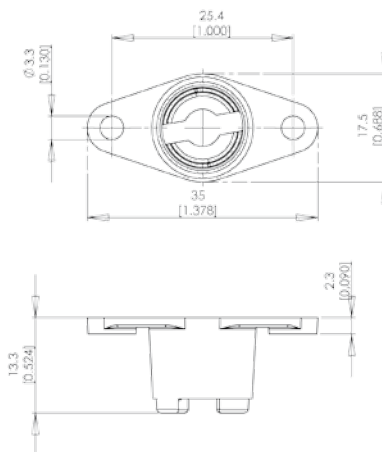
RECEPTACLE

205-1000

MATERIAL: SILICON
BRONZE

FINISH: ZINC AND CLEAR
PASSIVATED - REACH
COMPLIANT

DIMENSIONS MM (IN)



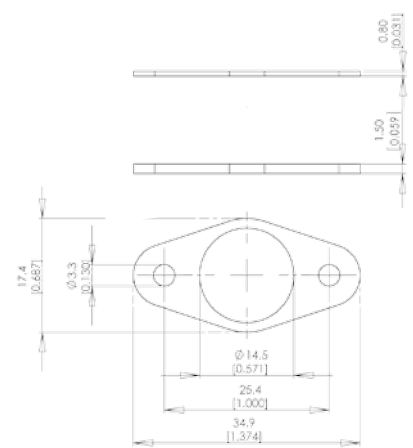
SHIM

205-9008

205-9015

MATERIAL: ALUMINIUM

FINISH: ANODISED



Another fastening innovation from



Distributed by:

www.aeroloc.co.uk

Seymour Wharf, Steamer Quay Road,
Totnes, Devon TQ9 5AL UK
Tel +44 (0) 1803 868677
Fax: +44 (0) 1803 868678
E-mail: sales@aeroloc.co.uk



Motorsport has been waiting 80 years for this.



All photos PSP Images except where marked